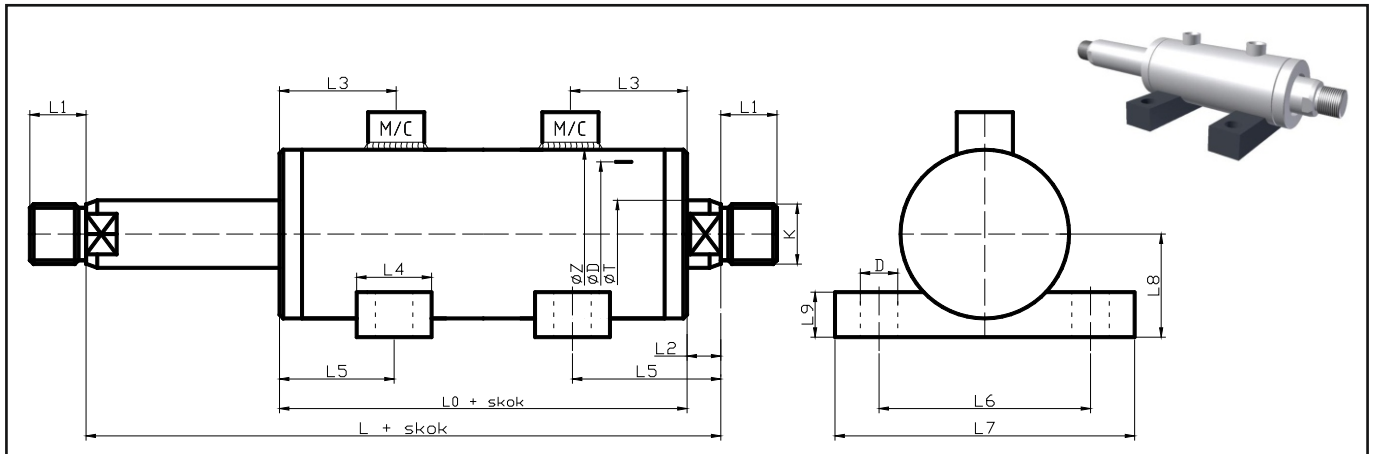


**BR CHT2-Ł(..)Z** - podwójne tłoczyisko - na łapach - gwint zewnętrzny



ØD	ØT	ØZ	D	L0	L1	L2	L3	L4	L5	L6	L7	L8	L9	M [metr.]	C [cal.]	K
25	18	35	9	175	14	12	44	25	44	68	90	28	12	M14x1,5	G1/4"	M12x1,5
32	22	40	9	178,5	16	12	45	25	55	68	90	28	12	M14x1,5	G1/4"	M16x1,5
40	25	50	11	200	18	15	49	30	58	83	110	31	15	M16x1,5	G3/8"	M16x1,5
	28															
50	28	60	14	210	20	15	52	35	62	102	130	38	18	M16x1,5	G3/8"	M22x1,5
	32															
63	32	73	20	229	22	15	58,5	40	74	124	165	44	25	M22x1,5	G1/2"	M27x2
	36															
	40															
65	32	75	20	230	22	15	58,5	40	74	124	165	44	25	M22x1,5	G1/2"	M27x2
	36															
	40															
70	40	85	20	240	22	15	61	40	74	124	165	49	25	M22x1,5	G1/2"	M27x2
80	40	95	20	270	30	18	67	45	85	149	190	57	30	M27x2	G1/2"	M33x2
	45															
	50															
	55															
100	50	115	26	282	36	20	70	50	96	172	240	68	35	M33x2	G3/4"	M42x2
	55															
	60															
	70															
125	70	150	26	306	45	23	74	60	108	205	255	85	35	M33x2	G3/4"	M48x2
	80															
140	70	165	30	326	50	26	78	70	115	220	280	95	35	M33x2	G3/4"	M56x2
	80															
	90															
160	90	185	33	366	56	36	93	75	120	250	310	115	40	M33x2	G3/4"	M64x2
	100															
	110															
180	125	219	40	420	60	36	113	90	135	300	390	135	50	M33x2	G3/4"	M72x2

**Siłowniki o wymiarach innych niż podane w tabeli, wg ustaleń z klientem.**